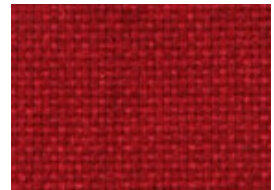
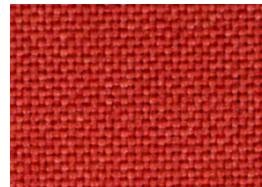




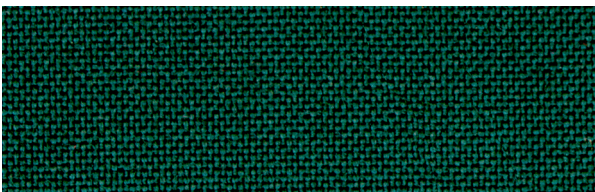
Gallery



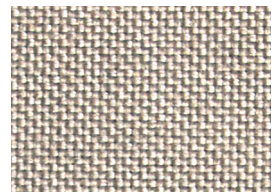
Poppy



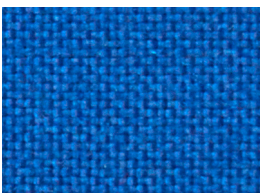
Claret



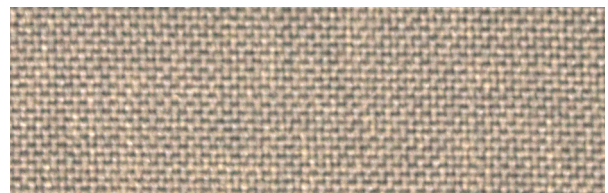
Hunter



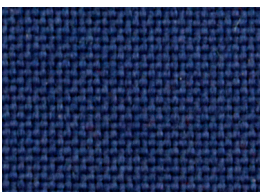
Pebble Grey



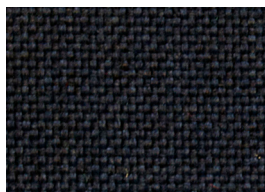
Capri



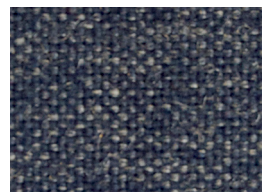
Gunsmoke



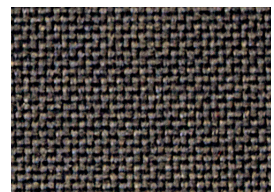
Riviera



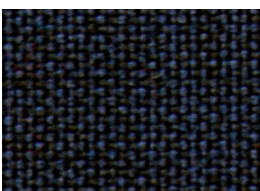
Navy



Stonewash



Storm



Venus



Nebula



Black

# Quantum

Width	160cm
Composition	100% Polypropylene
Roll size	50-55m approx
Weight	440gms per lineal metre
Use	Upholstery, Screen
Abrasion	40,000 + Martindale
Flammability	AS1530.3, ISO5660, AS3837
Qualities	Anti Static Non allergenic Meets ISO9001 & ISO14001 environmental Inherently mildew/rot and moth proof Resistant to moisture, stain and soiling

**Colour Variations:** All textiles are subject to some colour variation.  
Fabric supplied to customer order will be within commercial tolerance.

**CTA Performance Rating:** Tests conducted by independent testing laboratories indicate that QUANTUM met or exceeded the performance guidelines for Screen and Heavy Duty Commercial Fabric Use as determined by the CTA (Commercial Textile Association of Australia and New Zealand).

**Fabric Care:** Do not remove any part for separate cleaning. Protect from direct sunlight. Vacuum regularly using low suction. Rotate reversible cushions regularly. Professional cleaning recommended.

AUSTRALIA  
telephone: 1800 173 209  
web: [atworkwithcamira.com](http://atworkwithcamira.com)  
email: [sales@atworkwithcamira.com](mailto:sales@atworkwithcamira.com)  
\*at work is a brand of Textilia

NEW ZEALAND  
telephone: +64 9 302 3182  
web: [textilia.co.nz](http://textilia.co.nz)  
email: [info@textilia.co.nz](mailto:info@textilia.co.nz)



Commercial Textile Association  
of Australia & New Zealand Limited.



Commercial Textile Association  
Performance Rating.



Commercial Textile Association  
Performance Rating.